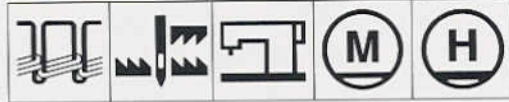




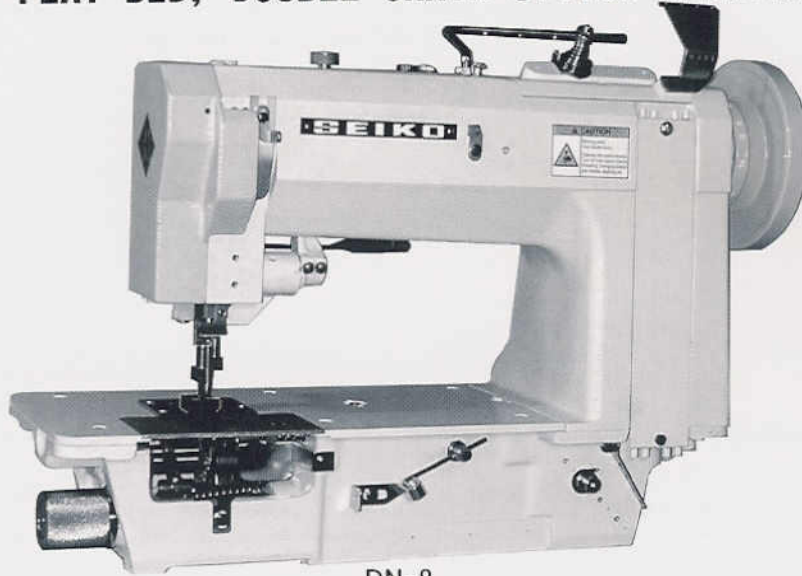
TRADE MARK

SEIKO

DN SERIES



HIGH SPEED, FLAT BED, DOUBLE CHAIN STITCH MACHINES



DN-8

- Variety -



Single needle



Two needle



DN-8

DN-28

Compound feed and alternating pressers



DN-8R

DN-28R

Compound feed and alternating pressers, and clutch driven puller feed



DN-8-AP

DN-28-AP

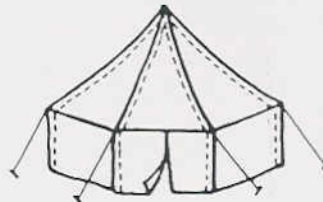
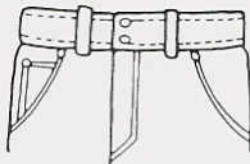
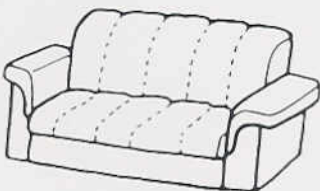
Compound feed and alternating pressers, with pneumatic pressure control



DN-8R-AP

DN-28R-AP

Compound feed and alternating pressers, with pneumatic pressure control, and clutch driven puller feed



APPLICATIONS:

For sewing medium to heavy weight fabric, leather, canvas, denim, synthetics, and various coated and laminated materials

Suitable for automobile upholstery, work gloves, luggage, trousers, carpets, mattresses, etc.

DN SERIES

■ FEATURES

- Semi-automatic lubrication system
- Reduced noise level
- Easy accessibility for threading loopers
- Stitch lengths adjusted by needle feed and drop feed motions separately
- No bobbin winding or changing (double chain stitch)
- Compound feed mechanism ensures even feeding of article being sewn
- Three and Four needle machine available in special order

■ SPECIFICATIONS

Variety	Max. speed (s.p.m.)	Max. stitch length	Clearance under presser foot	Needle bar stroke	Needle (standard)
-8 / -28	3,500	19/64" (7.6 mm)	7/16" (11 mm)	1-7/16" (36.5 mm)	DVx59 (#22) 62x59 (#140)
-8R / -28R					
-8-AP / -28-AP					
-8R-AP / -28R-AP					
Variety	Amount of lif of alternating presser foot		Bed size	Working space	
-8 / -28	3/64" - 13/64" standard 3/32" (1.0 - 5.0 mm) (standard 2.5 mm)		20-25/64" x 6-31/32" (518 x 177 mm)	10-5/8" x 5-5/16" (270 x 135 mm)	
-8R / -28R					
-8-AP / -28-AP					
-8R-AP / -28R-AP					

NOTE

Speed depends on threads, materials and type of operation

■ NEEDLE GAUGES

Variety	inch	mm	STANDARD *
-28	1/4"	6.4	*
-28R			
-28-AP	3/4"	19.1	-
-28R-AP			

- 3/16" to 2 inch gauge size available in special order
- Compound feed and alternating pressers type available in Flat bed(LD Series,1-2-3-4-5-6 Needle)



SEIKO
SEWING MACHINE CO., LTD.

<http://www.tctv.ne.jp/seik0001/>

SEIKO SEWING MACHINE CO., LTD.
11-3, Imado 1-chome, Taito-ku, Tokyo 111-8534, Japan
TEL: +81-3-3872-6173 (Overseas group)
FAX: +81-3-3873-6596
E-Mail: seik0001@tctv.ne.jp
URL: <http://www.tctv.ne.jp/seik0001/>